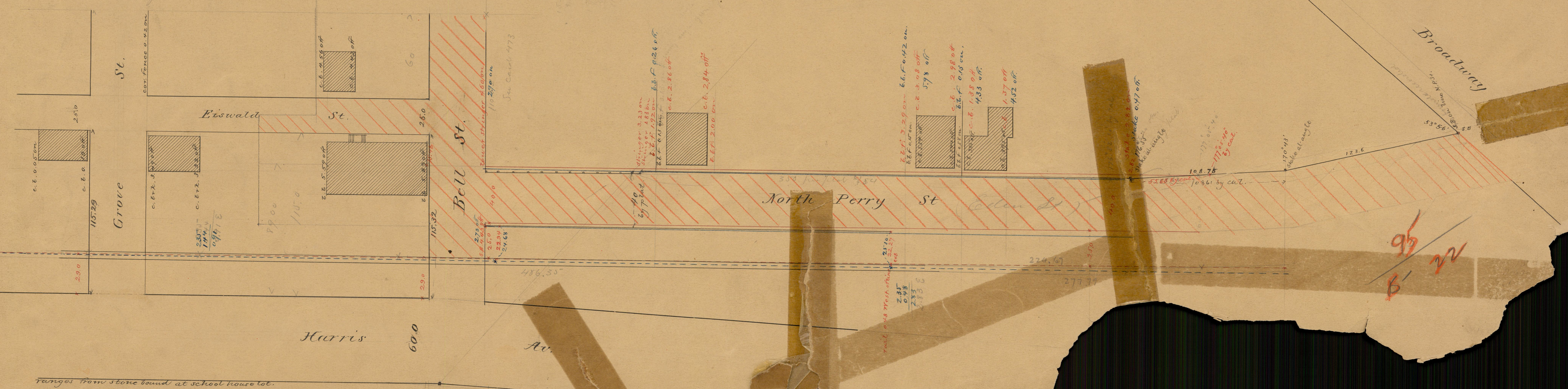


From maps in possession of the N.Y. P. & B. R.R. Co. it appears that the center line of the original location was 29 feet easterly from Potters (now Harris) avenue and that the easterly line of the location was 25 feet easterly from the center line (The portion of Harris av. referred to being north of Bell st.) The red lines and figures correspond with this understanding and were recommended for laying water pipe in N. Perry St. July 1886.

The blue lines and figures correspond with the present westerly track (center line) and are obtained by calculation.

The black offsets (referring to N.P. St.) correspond with Card #154 and were obtained by turning off the angle from Broadway.

Mr. Sawley considers the location of the tracks to be the best guide to the land line of the rail road.



Changed to Eden St.

PROVIDENCE, R. I.
CITY ENGINEER'S OFFICE
STREET LINE DEP'T.
July 17, 1886
012063

95
B-22

Ranges from stone bound at school house lot.